



PACIFIC PIECEMAKERS QUILT GUILD

# Bits & Pieces

[www.pacificpiecemakers.org](http://www.pacificpiecemakers.org)

June 2017

NEWSLETTER EDITOR: JUDY RIDDLE

## PRESIDENT'S MESSAGE

Last week I was finally able to get into my studio and start sewing again after a 6 month hiatus. Grandbaby became the focus of my life for a while, and then life got in the way. I've started a Quilt of Valor from fabric I found in the fanny basket. As I checked my bin of patriotic fabrics, I realized I have enough for 3 quilts. I donate one patriotic quilt to a friend who is active in the DAR to raffle in the fall as well as donating my QOV. Now all I need is backing! It's great to be back in the studio doing something I love.

As Sandy announced at the last meeting, there will be an Executive Committee meeting before the next regular Guild meeting in September. If interested, please join us. We will be discussing changes to the bylaws and updating and reviewing job descriptions.

I'm looking forward to the Guild picnic. It is always fun and there are always so many topping choices for our salad that everyone can make a gourmet lunch! The winners in QUILTO come away with new treasures for their fabric stash. Hope to see you there.

**We are still in need of a couple of volunteers: One for Hospitality committee, another to Program chair.**

*~Cheryl Faconti*

Due to family and personal commitments, Viki Seed is unable to continue as the Newsletter editor. I have agreed to return as the Newsletter editor. I'm afraid I will not be able to provide the beautiful artwork Viki delivered, but will do what I can. Please send your newsletter items and pictures to my email in the future.

*~Judy Riddle*

## MARK YOUR CALENDARS

July 28 – Guild Picnic at GAC  
August 13 & 14 – Art in the Redwoods Sale  
September 13 & 14 – “Rings” Workshop  
September 15 -- Guild meeting  
October 11 & 12 – Festival of Trees Workshop  
October 13 – Guild meeting  
November 17 – Guild meeting  
November 24 & 25 – Festival of Trees

## JULY OUTING -- GUILD PICNIC

July 28 – 11:30 until ?  
Gualala Art Center Picnic Area

### PPQG to Provide:

Salad Greens/Dressing  
Bread and Butter  
Cookies for Dessert  
Pitchers of Ice Water  
If it is a chilly day: Coffee/Tea

### Please Bring:

A Salad Topping to Share  
Your Place Setting (plate, knife, fork, spoon)  
Your Favorite Drink (if other than water)

You may also want to bring a hat if it is sunny or a light sweater or jacket if it is foggy.

### AND

3 Fat Quarters for a rousing game of QUILTO!  
Buttons/Pennies to use as markers on your QUILTO cards.

Please **RSVP** to either Janice Batchelder at [janicebatch1@gmail.com](mailto:janicebatch1@gmail.com) or to Carole Garcia at [c.garcia@att.net](mailto:c.garcia@att.net) by **July 21<sup>st</sup>**. This is not a firm commitment, but will give us an idea of how many to plan for.

*~Janice Batchelder & Carole Garcia*

## 2018 QUILT CHALLENGE

### “JOURNEYS”

We still have not received confirmation of our October 2018 Challenge dates. Please don't let this stop you from planning/starting your challenge entry.

We have had some questions/requests for clarification of the challenge guidelines from those who are starting to plan. The theme is “**Journeys**”. There is a fabric requirement – a beautiful blue-on-blue print. The use of 5 square inches on the top/front of the quilt is required. Five inch squares are currently available from either Carole Garcia or Barbara Dunsmoor. You may use more than the 5 inch square – additional fabric is available at The Loft. The required 5 inch square may be cut into as many pieces as you would like. The pieces may be pieced/sewn into the quilt, appliqued on or used to create embellishment(s).

As soon as we have confirmation of the challenge dates, we will send out an email announcement. Thank you for your patience.

*~Barbara Dunsmoor, Carole Garcia & Cheryl Harris*

## ART IN THE REDWOODS QUILT 2018

Melissa Finley is preparing the blocks and has developed a design. She is asking for helpers to work on the quilt. Please contact her if you are interested in helping.

## MEMBERSHIP

With great sorrow, we convey that long-time guild member Claire McPherson passed away recently from complications after hip surgery. She will be missed.

Cards or condolence may be mailed to:  
The McPherson family  
2209 Chambers Lake Lane SE  
Lacey, WA 98503

*~Gail Spencer*

## CHRISTMAS TREE

### Don't you just love Christmas in June?

I want to give you an update on the plans for our Christmas tree entry in Festival of Trees this year. Remember we have been challenged by the clay studio, I know we are up to the challenge! If we win most popular and/or highest bid, we earn money for our treasury.

After a couple of discussions at meetings, we have decided on blue, silver and white theme for this year. We need lots of ornaments. They can't be too big, since the tree is only 4 feet tall and not very full. They also need a bit of silver glitz to support the theme. In order not to duplicate unnecessarily, there are some decisions we have made.

- 1) Please don't make garland, since the tree shape won't handle it.
- 2) We already have a string of lights that look like little crystal balls and are on a battery.
- 3) Katherine Gyorf has agreed to make a tree topper.
- 4) Judy Riddle has agreed to make a tree shirt.
- 5) Ornaments should be no larger than 3" wide or they will not fit on the tree.

We will use as many ornaments as we can – lots and lots! But if we can't fit them all on (I hope, I hope!), we will sell them at Festival of Trees, unless you tell me you want them back.

PPQG is made up of the most talented people I know. Let's make this year's tree even better than last year's. You can leave your ornaments in the back room of the Dolphin, or see me at guild meetings. The deadline is Monday, **November 20**, but I'll take them any time from now on. Thanks!  
*~Barbara Dunsmoor*

## TREASURER'S REPORT

Beginning Balance.....	\$12,774.77
Ending Balance.....	\$11,503.28

*~Pam Todd*

## 2017 PROGRAMS

Marcia and I have compiled your responses to our survey of your interests. We want to say a big thank you to all who responded. I've sent an email with the tallied results. We will do our very best to bring teachers who will teach to your interests.

We have learned a lot from our classes this year. **September 13 & 14** will be our final workshop offering, with Phyllis McCalla teaching about curves in "Rings". Thank you to everyone who responded to our plea and enrolled quickly. The Rings class enrollment stands at 11. Maximum enrollment is 12. Please check the PPQG or GAC websites for details about the class and the supply list.

**September 15 Guild meeting** will be a trunk show by Phyllis McCalla showing her award-winning quilts.

**October 11 & 12** will be a workshop similar to the Comfort Quilt workshop. This will be an opportunity to make items for the Festival of Trees sale.

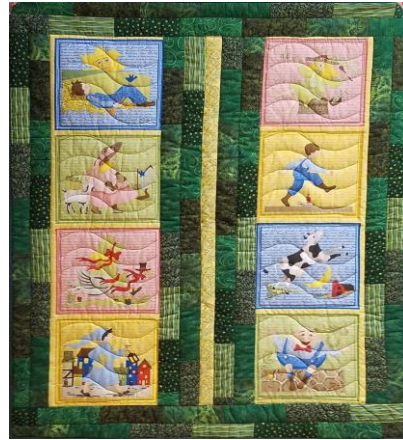
**October 13 Guild meeting** will be Ariana Strozzi of Chasari Ranch, just south of Point Arena. She will be talking about using wool in quilts.

**November 17 Guild meeting** will be our final speaker for the year, Sherry Werum. She will be speaking about quilts inspired by Frank Lloyd Wright and Art Deco influences.

On a non-program note, the response to bringing 5" squares for I-Spy quilts was fabulous. Many of you brought squares to share and it was wonderful to see many of you collecting squares to make a quilt. It will be great to see all those I-Spy quilts at Art in the Redwoods and/or Festival of Trees sales.

*~Francie Angwin and Marcia Luchini*

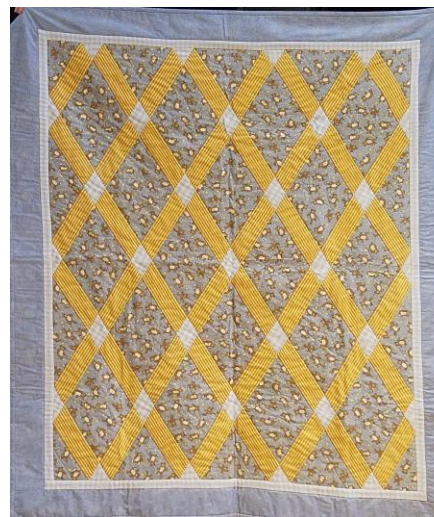
## JUNE GUILD MEETING



Comfort Quilt  
made with  
Nursery  
Rhyme blocks  
by Iris Lorenz-  
Fife



Two Comfort  
Quilts by  
Katherine  
Gyorfi



Three Quilts made by  
Janice Batchelder



Quilt #1



Quilt #2



Quilt #3



Quilt by  
Sandy Hughes



Quilt by  
Mary Eberhard  
made with her  
cousin's UFO (to  
be a gift for  
granddaughter)



Kathryn Weiss  
showed QOV  
made by TAGS  
quilt group